

Copyright ©: Comesa S.r.l. 2023

Based on an idea by Raffaele Santi - Sales & Marketing Manager
Graphic Design and 3D Modeling by DVDesign.it

APPLICATION OVERVIEW

COMPANY PROFILE
PRODUCTION PROCESS

STEEL WORKS AND ALUMINUM MILLS	
HOT PLATE LEVELLER	01
COLD PLATE LEVELLER	02
TABLE ROLLS	03
TENSION LEVELLERS	04
SCALE BREAKER	05
PROCESSOR - PINCH ROLLS	06
PROCESSOR - STRAIGHTENING ROLLS	07
COLD ROLLING MILLS	
20-HI SENDZIMIR MILLS	08
4HI / 6HI ROLLING MILLS	09
METAL WORKING SERVICE CENTRES	
LEVELLERS AND STRAIGHTENERS	10
MAINTENANCE	11
SLITTING LINES - ARBORS	12
SLITTING LINES - DE-BURRING ROLLS	13
CALENDERS	14
BAR MILLS	
STRAIGHTENERS	15



COMPANY PROFILE

COMESA S.R.L., founded in 1966, is a renowned name in the metal industry worldwide.

The company specializes in manufacturing a wide range of high precision custom-built steel rolls and related products used in the metal industry.

Having a rich experience of 6 decades and expert knowledge of application, heat-treatment, grinding and chrome plating processes, COMESA has evolved to the leadership position in the industry.

Situated in the city of Bologna in Italy, COMESA is catering to a wide number of customers spread across 6 continents. It has been a reliable and preferred partner for many renowned OEMs, Steel plants, and big and small metal processing companies for many years.

Comesa caters to following types of industries:

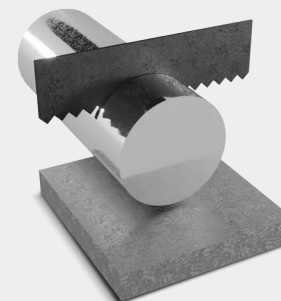
- STEEL WORKS AND ALUMINUM MILLS;
- METAL WORKING SERVICE CENTRES;
- BAR MILLS.

Company with Quality Management System
Certified ISO 9001.
Cert. N. 50 100 3292

Made in Italy

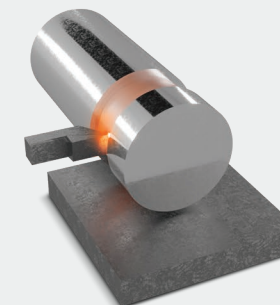


PRODUCTION PROCESS



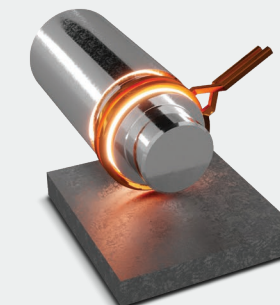
CUTTING

WITH SEMI-AUTOMATIC,
HIGH-SPEED BAND-SAWS



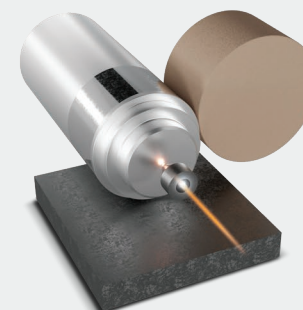
TURNING

DONE ON BOTH CONVENTIONAL
AND N.C. LATHES



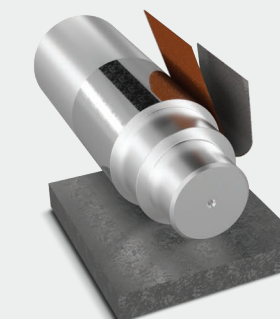
HEAT TREATMENT

INDUCTION HARDENING, THROUGH
HARDENING OR CASE-HARDENING,
DEPENDING ON THE FINAL APPLICATION



GRINDING ON CENTRES

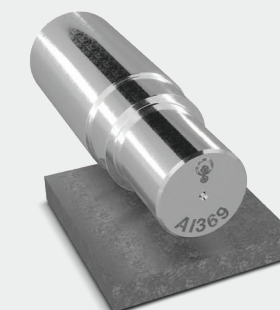
WITH THE ABILITY TO REACH
GEOMETRICAL AND DIMENSIONAL
TOLERANCES LESS THAN 0,01 MM



CHROMIUM PLATING / POLISHING

CHROMIUM PLATING ON ROLLS WORKING
ON POLISHED MATERIALS, SUCH AS
ALUMINUM, STAINLESS STEEL, ETC.

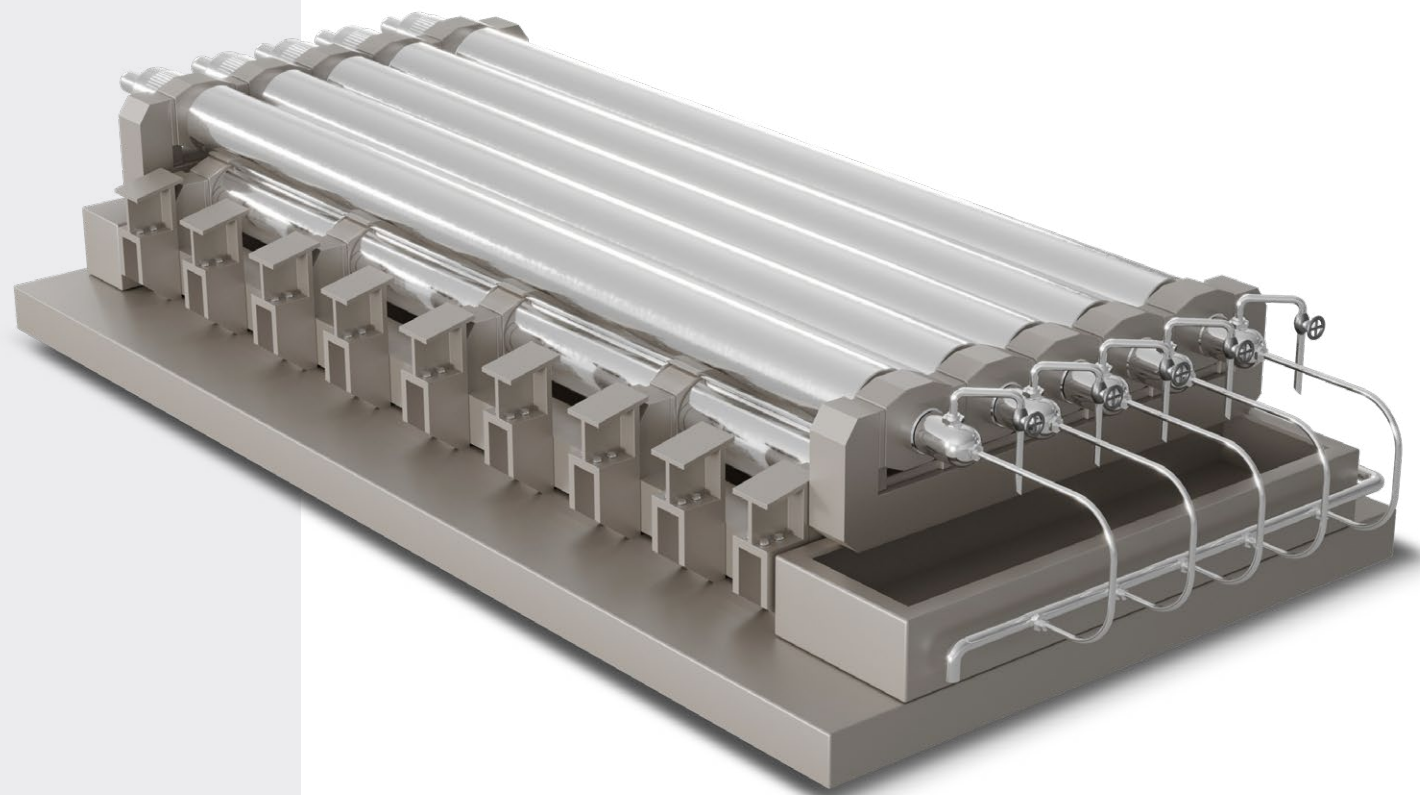
POLISHING WITH THE POSSIBILITY TO REACH
A FINAL SURFACE FINISH OF $RA \leq 0,1 \mu m$



MARKING

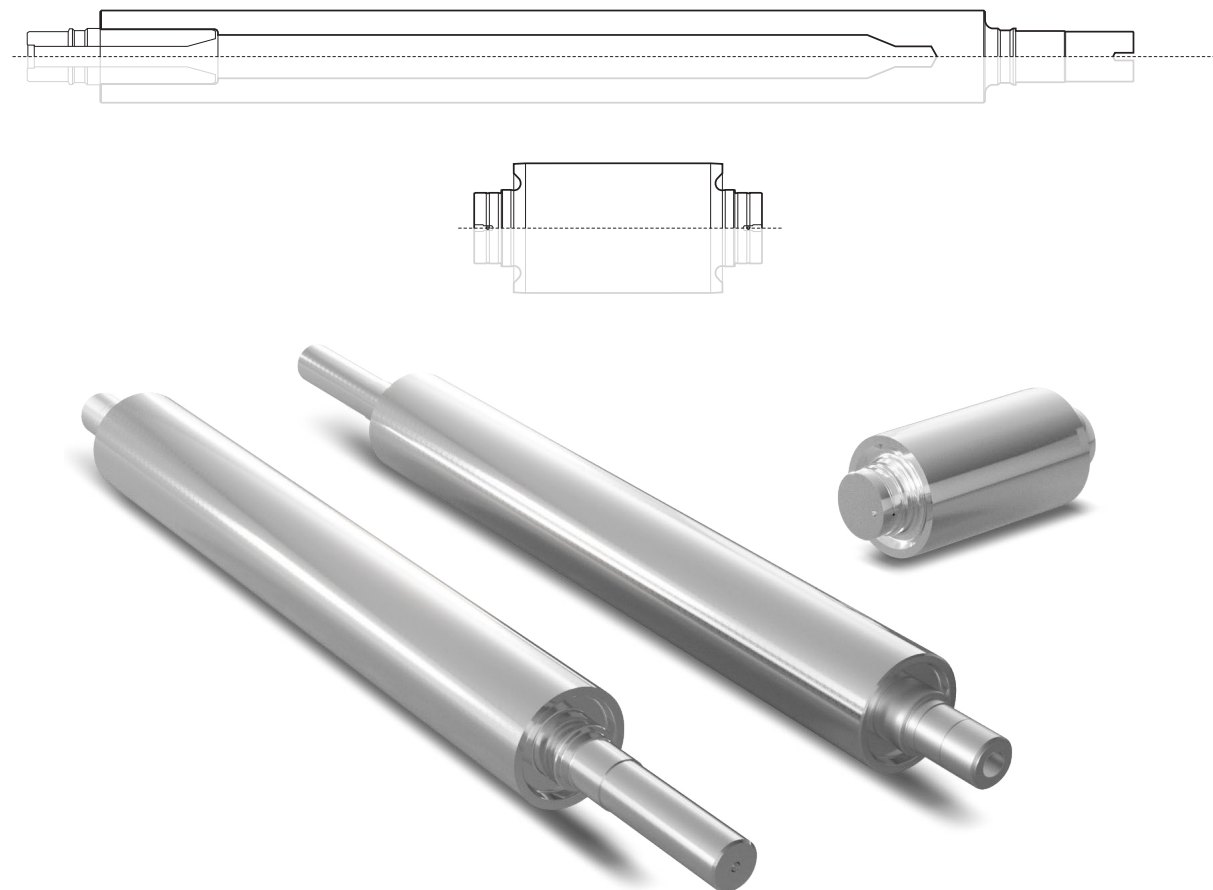
TO GUARANTEE THE COMPLETE
TRACKING OF OUR PRODUCTS

STEEL WORKS AND ALUMINUM MILLS



Used inside the hot plate mills.
Work and back-up rolls manufactured from forged, hot-working steel grades
to withstand high thermal shocks.

HOT PLATE LEVELLERS WORK ROLLS, BACK-UPS



Standard diameters

from 220 mm. to 500 mm.

Standard lengths

from 4000 mm. to 6000 mm.

Mainly used steel grades

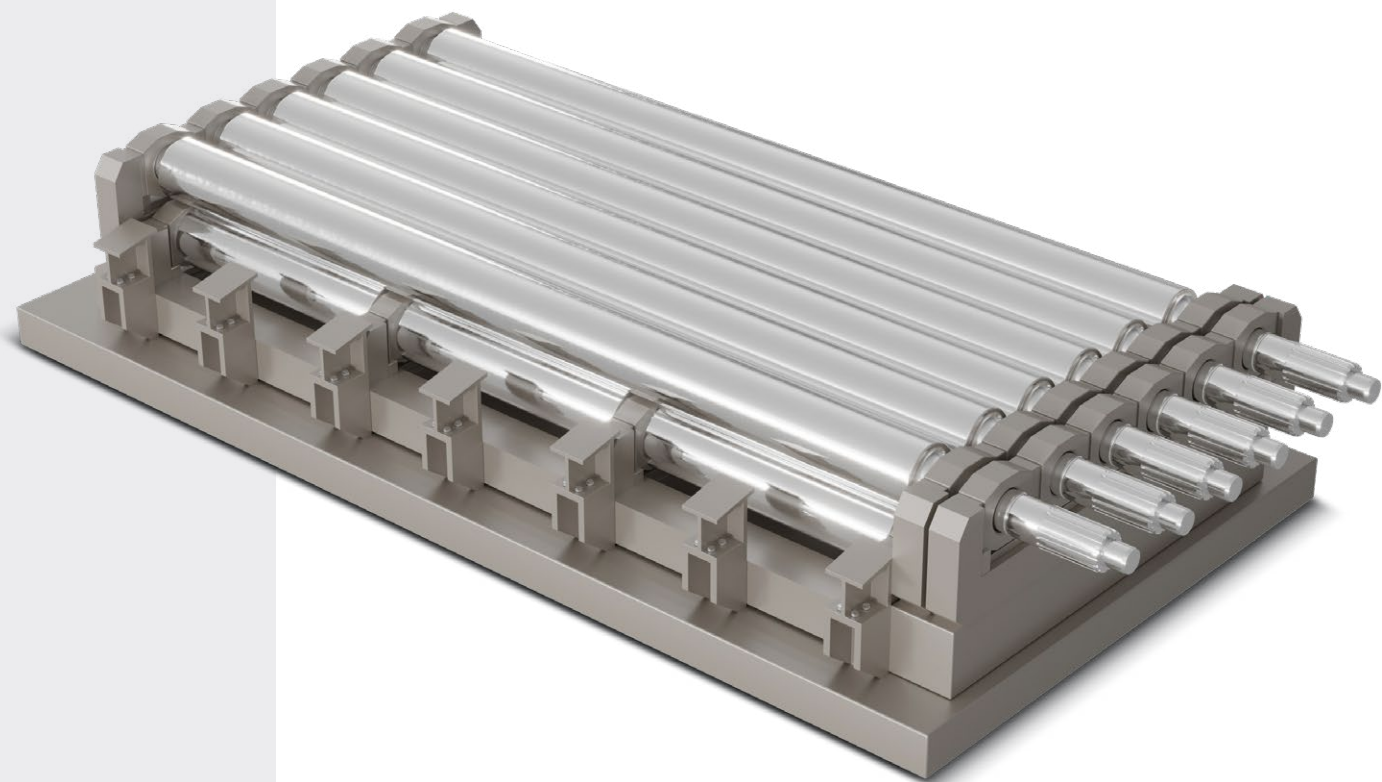
X63CrMoV5.1 (W 1.2362)

X40CrMoV5.1 (W 1.2344)

X38CrMoV5.1 (W 1.2343)

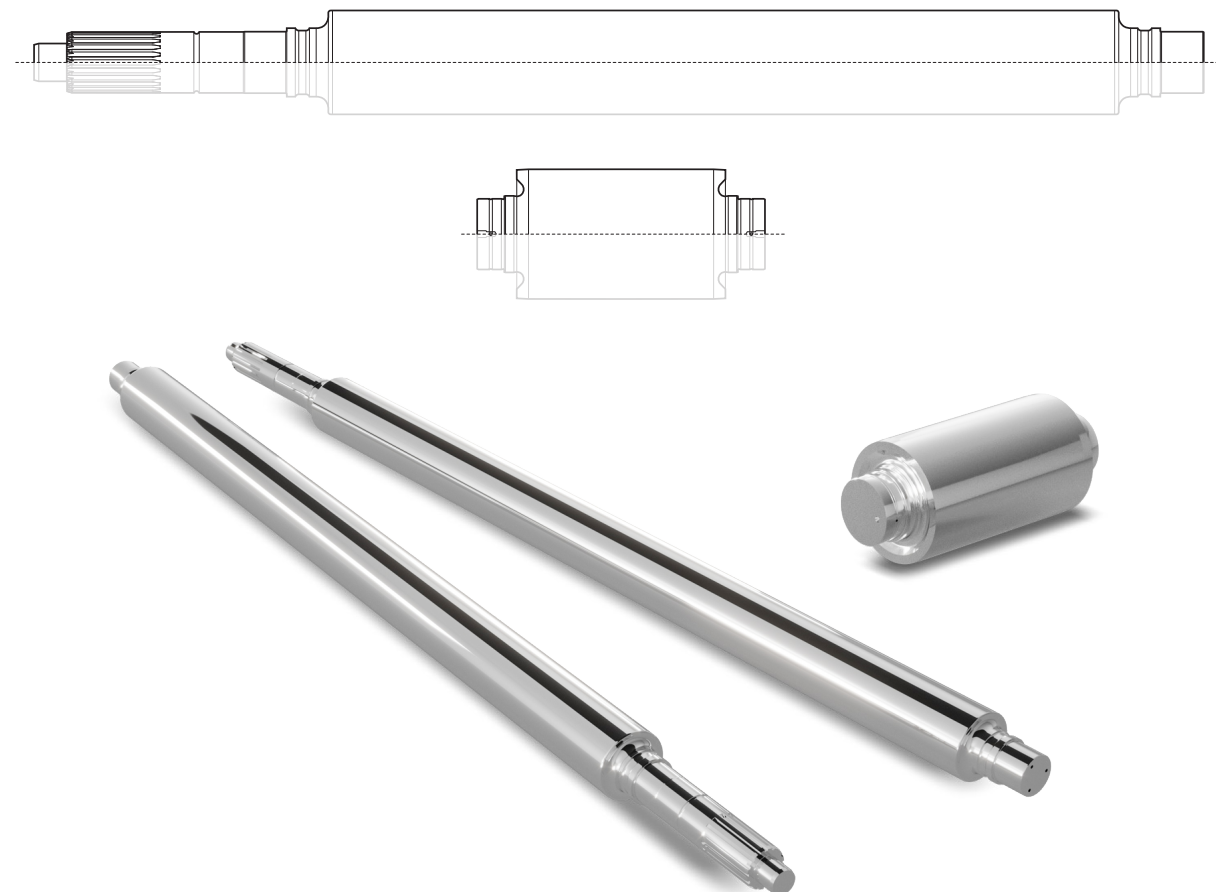
56NiCrMoV7 (W 1.2714)

STEEL WORKS AND ALUMINUM MILLS



Used inside the cold plate mills.
Work and back-up rolls manufactured from forged steel grades with high hardness and wear resistance.

COLD PLATE LEVELLERS WORK ROLLS, BACK-UPS



Standard diameters
from 180 mm. to 400 mm.

Standard lengths
from 3500 mm. to 6000 mm.

Mainly used steel grades

X63CrMoV5.1 (W 1.2362)
86CrMoV7 (W 1.2327)
50CrMo4 (W 1.7228)

STEEL WORKS AND ALUMINUM MILLS



Used in all the Aluminum mills, those biconical table rolls are manufactured in forged steel grades to avoid deformation and withstand high stresses applied.

TABLE ROLLS BICONICAL ROLLS



Standard diameters

from 180 mm. to 400 mm.

Standard lengths

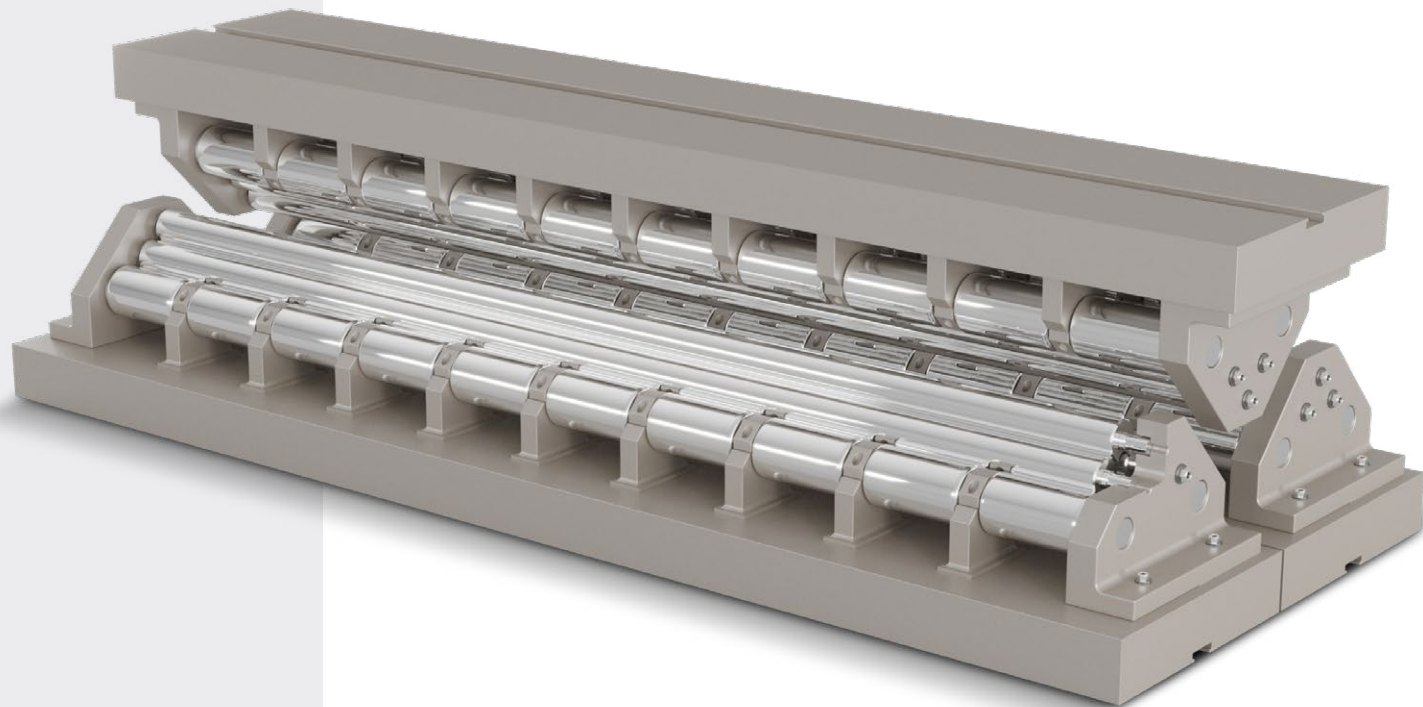
from 2500 mm. to 4000 mm.

Mainly used steel grades

56NiCrMoV7 (W 1.2714)

42CrMo4 (W 1.7225)

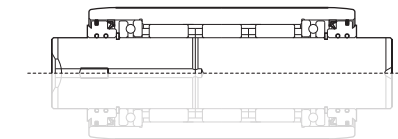
STEEL WORKS AND ALUMINUM MILLS



Consisting of levelling and bending rolls groups, it is used to level several kinds of metal strips (such as carbon steel, stainless steel, aluminum and non-ferrous materials) kept under tension.

TENSION LEVELLERS

WORK ROLLS, INTERMEDIATE ROLLS,
BACK-UP ROLLS, COMPLETE CASSETTES



Standard diameters

from 16 mm. to 100 mm.

Standard lengths

from 1000 mm. to 2500 mm.

Mainly used steel grades

100Cr6 (W 1.3505)

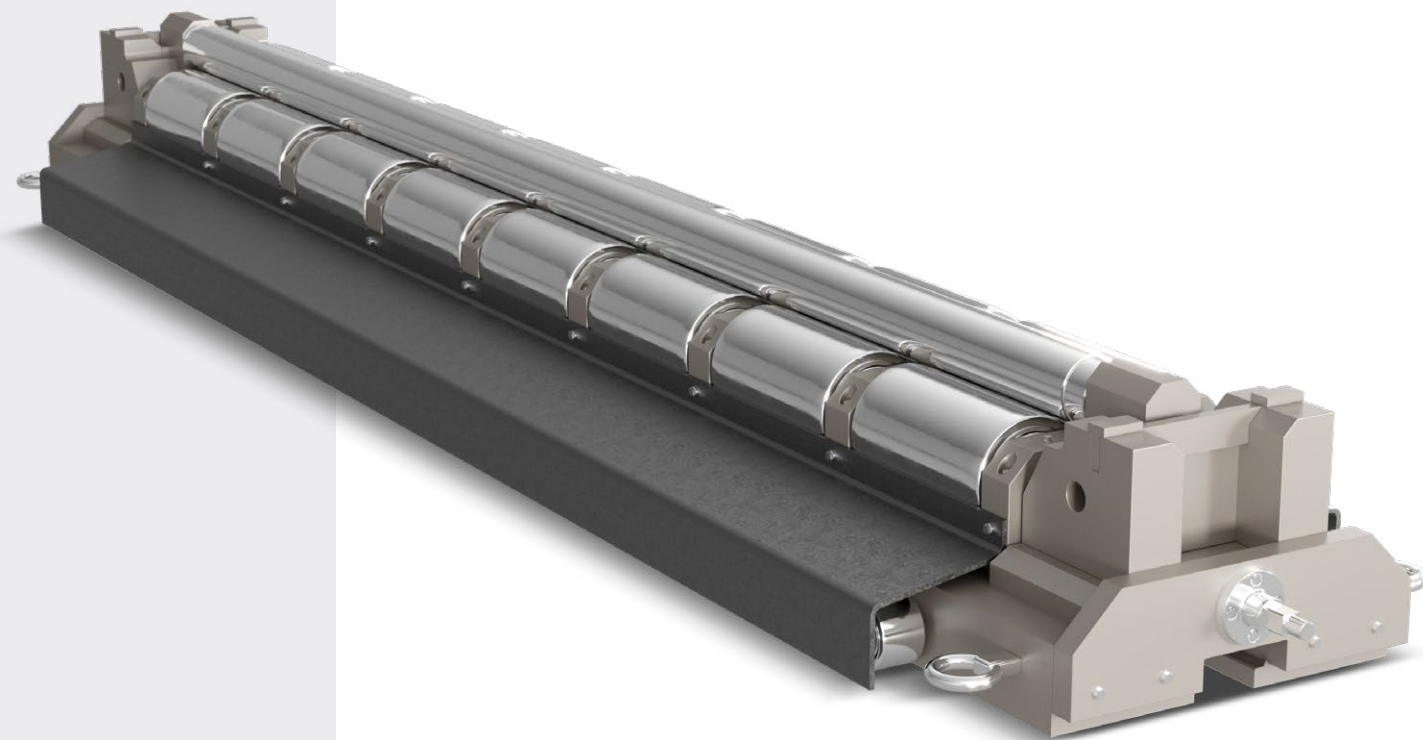
58CrMoV4 (W 1.7792)

51CrMoV4 (W 1.7701)

50CrMo4 (W 1.7228)

50CrV4 (W 1.8159)

STEEL WORKS AND ALUMINUM MILLS



Used on pickling lines, it breaks the scale and surface oxide layer to ensure a better efficiency of the process.

SCALE BREAKER ROLLS, BACK-UP ROLLS, COMPLETE CASSETTES



Standard diameters

from 40 mm. to 80 mm.

Standard lengths

from 1000 mm. to 2500 mm.

Mainly used steel grades

X155CrVMo12.1 (W 1.2379)

100Cr6 (W 1.3505)

58CrMoV4 (W 1.7792)

51CrMoV4 (W 1.7701)

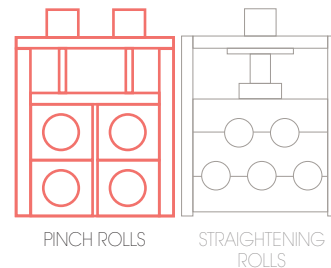
50CrMo4 (W 1.7228)

50CrV4 (W 1.8159)

STEEL WORKS AND ALUMINUM MILLS



Usually on the entry part of pickling lines, composed of 4 pinch rolls and 5 straightening rolls.



PINCH ROLLS

STRAIGHTENING ROLLS

PROCESSOR- PINCH PINCH ROLLS



Standard diameters

from 300 mm. to 320 mm.

Standard lengths

from 1500 mm. to 3500 mm.

Mainly used steel grades

X155CrVMo12.1 (W 1.2379)

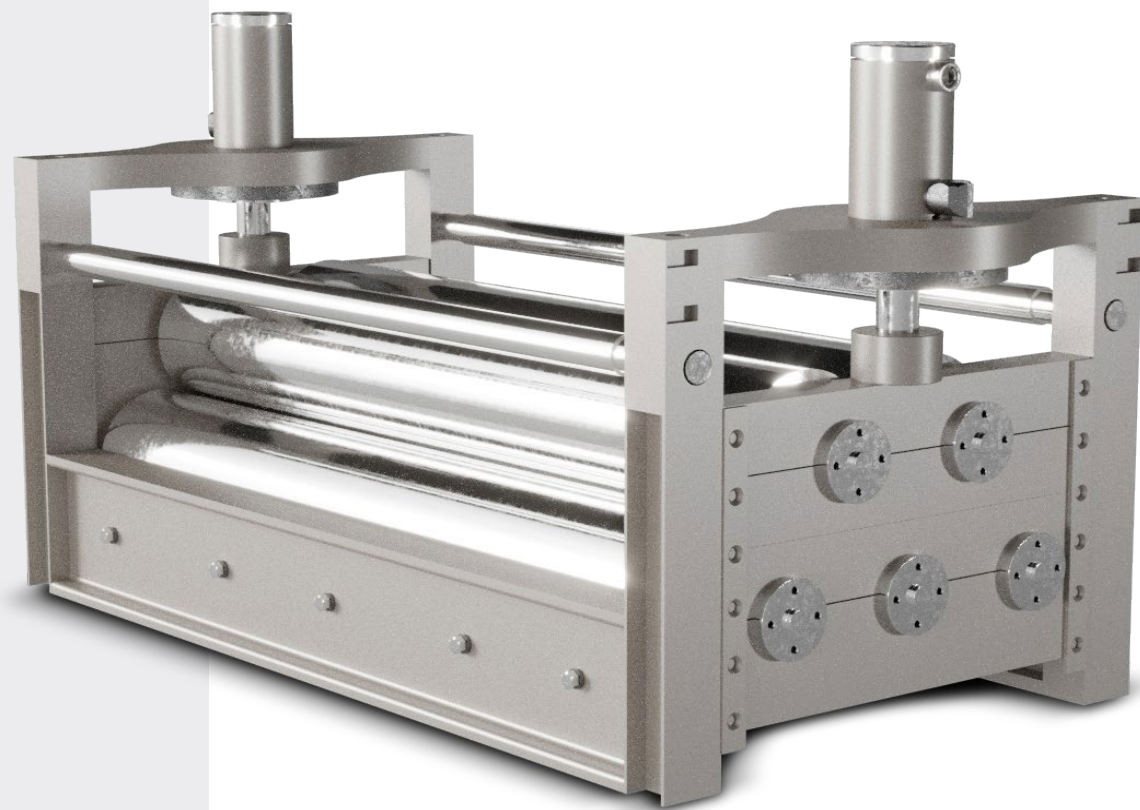
86CrMoV7 (W 1.2327)

100Cr6 (W 1.3505)

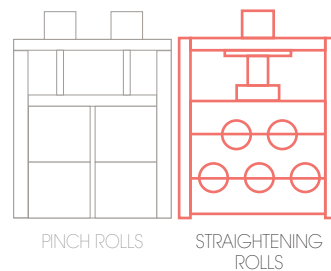
50CrMo4 (W 1.7228)

50CrV4 (W 1.8159)

STEEL WORKS AND ALUMINUM MILLS



Usually on the entry part of pickling lines, composed of 4 pinch rolls and 5 straightening rolls.



PROCESSOR - STRAIGHTENER

STRAIGHTENING ROLLS



Standard diameters

from 200 mm. to 220 mm.

Standard lengths

from 1500 mm. to 3500 mm.

Mainly used steel grades

X155CrVMo12.1 (W 1.2379)

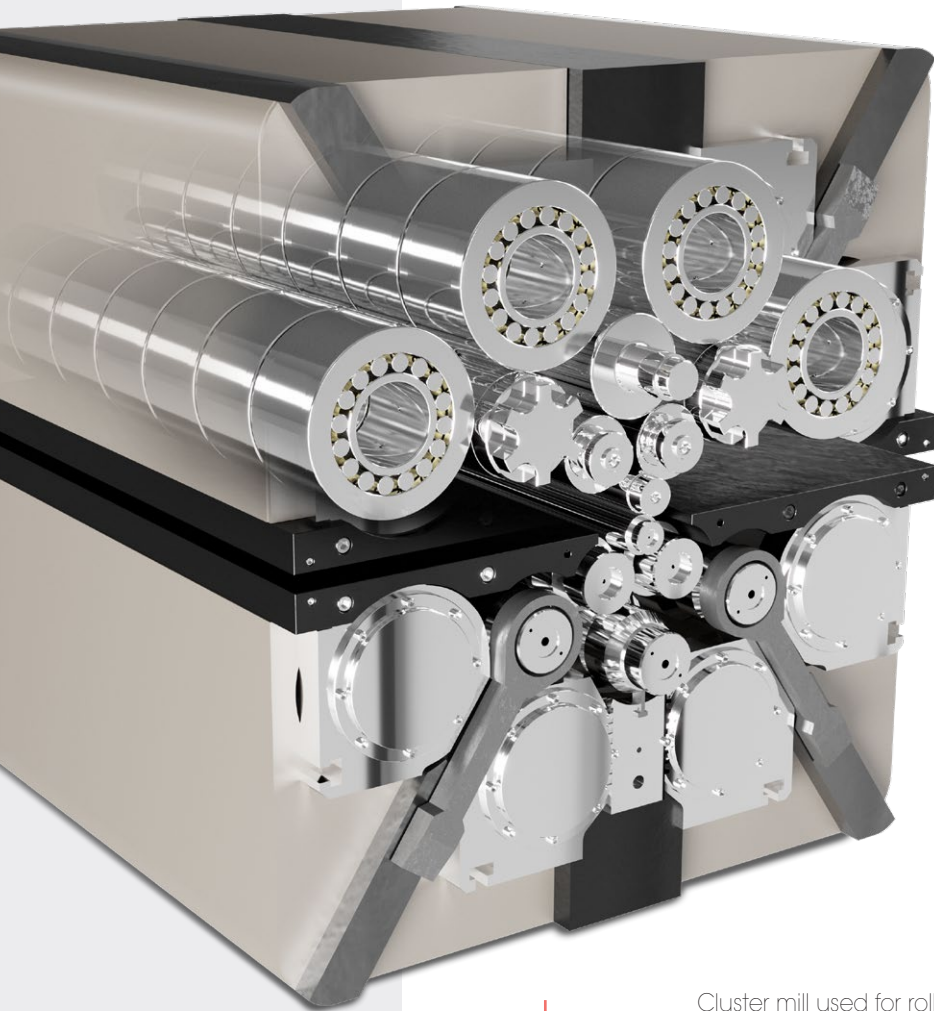
86CrMoV7 (W 1.2327)

100Cr6 (W 1.3505)

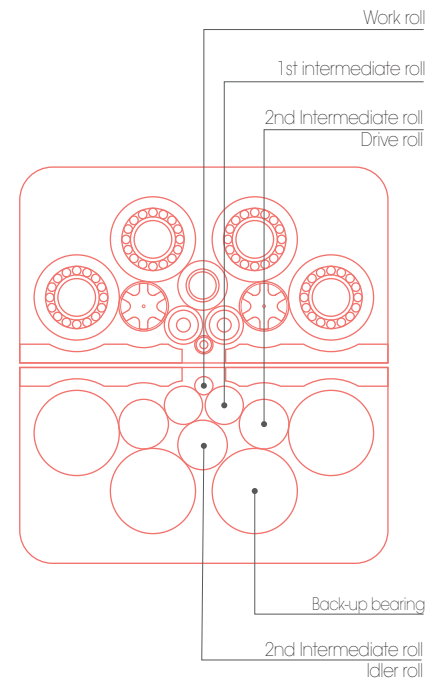
50CrMo4 (W 1.7228)

50CrV4 (W 1.8159)

COLD ROLLING MILLS

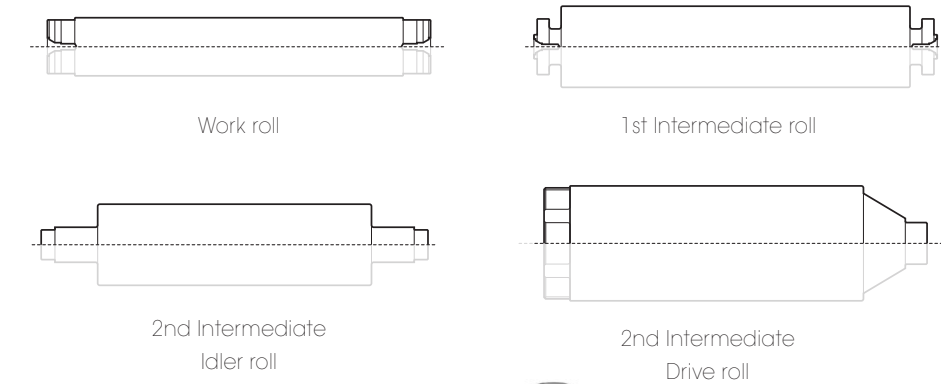


Cluster mill used for rolling hard and elastic materials such as stainless steel and non-ferrous alloys.



20-HI SENDZIMIR MILLS

WORK ROLLS, INTERMEDIATE ROLLS, BACK-UP BEARINGS



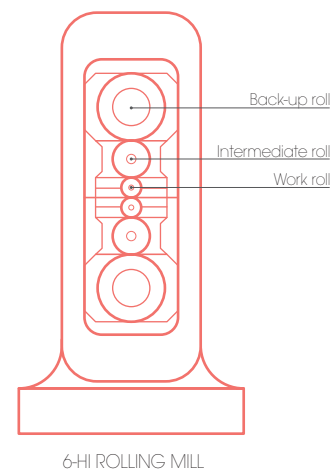
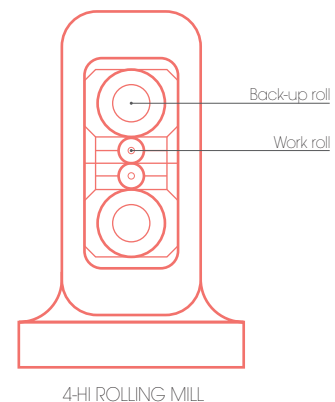
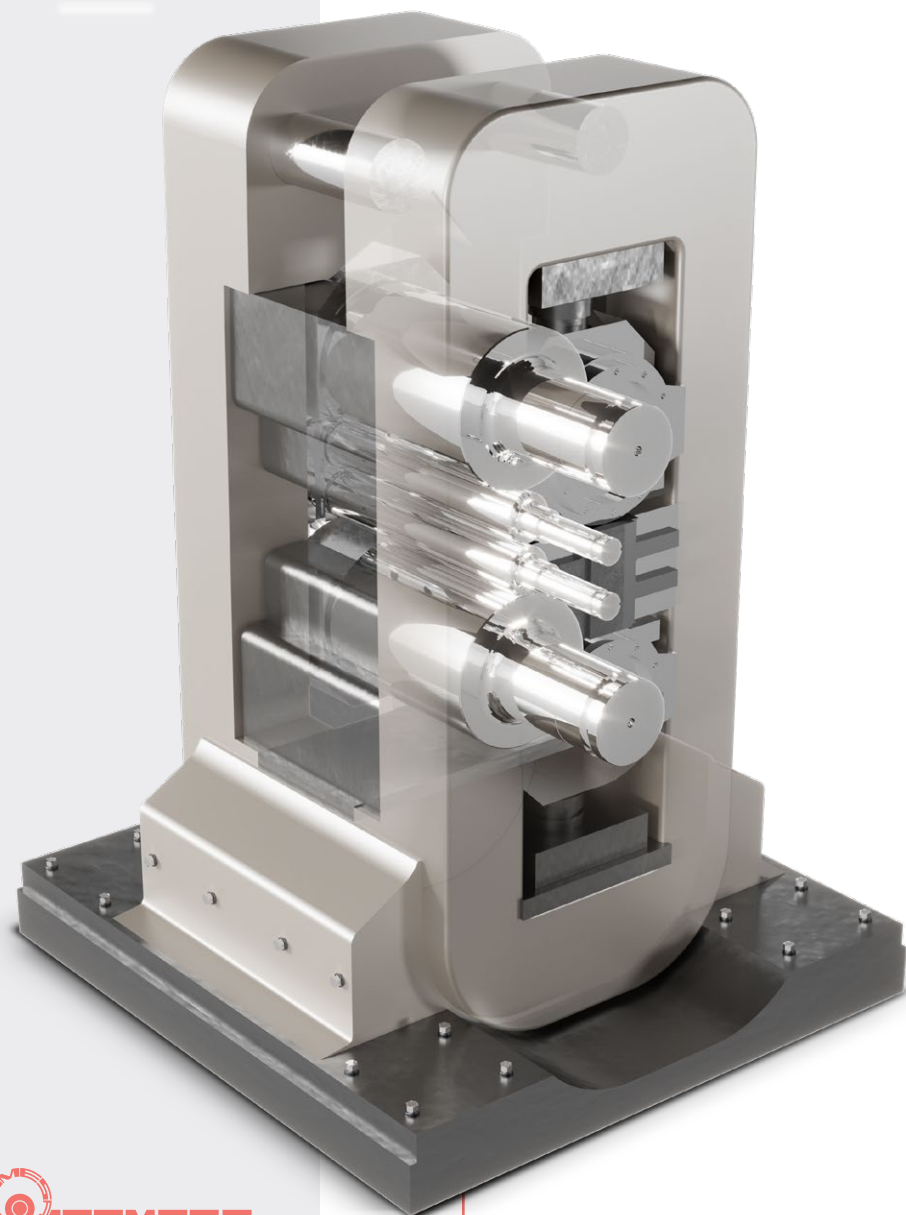
Standards Diameters

Standards Lengths

Mainly used steel grades

Work roll	from 20 mm. to 130 mm.	from 400 mm. to 2200 mm.	X155CrVMo12.1 (1.2379) X82WMoV6.5 (M2) X82WMoV2.9 (M1)
1st Intern. roll	from 40 mm. to 150 mm.	from 400 mm. to 2200 mm.	ASP2023 (M3:2) X63CrMoV5.1 (1.2362) X37CrMoW5.1 (1.2606)
2nd Intern. roll	from 65 mm. to 250 mm.	from 400 mm. to 2500 mm.	Special 8%Cr tool steels

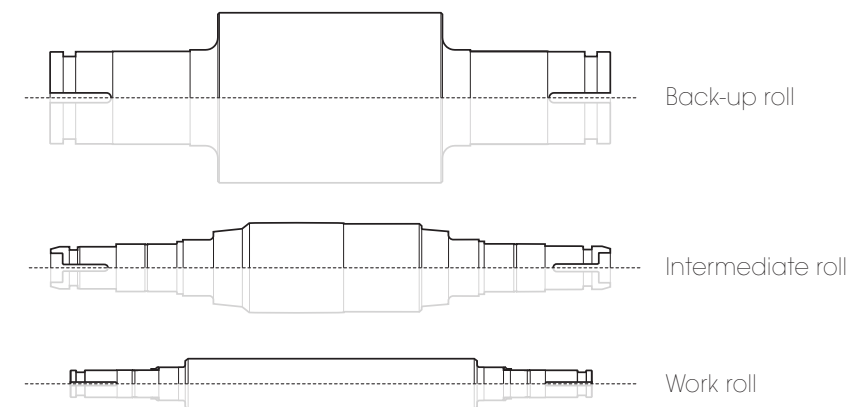
COLD ROLLING MILLS



Used in Steel and Aluminum mills to produce high-quality and uniform surfaces.

4-HI / 6-HI ROLLING MILLS

WORK ROLLS, INTERMEDIATE ROLLS, BACK-UP ROLLS



	Standards Diameters	Standards Lengths	Mainly used steel grades
Work roll	from 80 mm. to 280 mm.	from 800 mm. to 2500 mm.	9Cr3
Intermediate roll	from 130 mm. to 280 mm.	from 800 mm. to 2500 mm.	9Cr3Mo
Back-up roll	from 350 mm. to 500 mm.	from 800 mm. to 2500 mm.	X155CrMo12.1 (W 1.2379) X63CrMoV5.1 (W 1.2362)

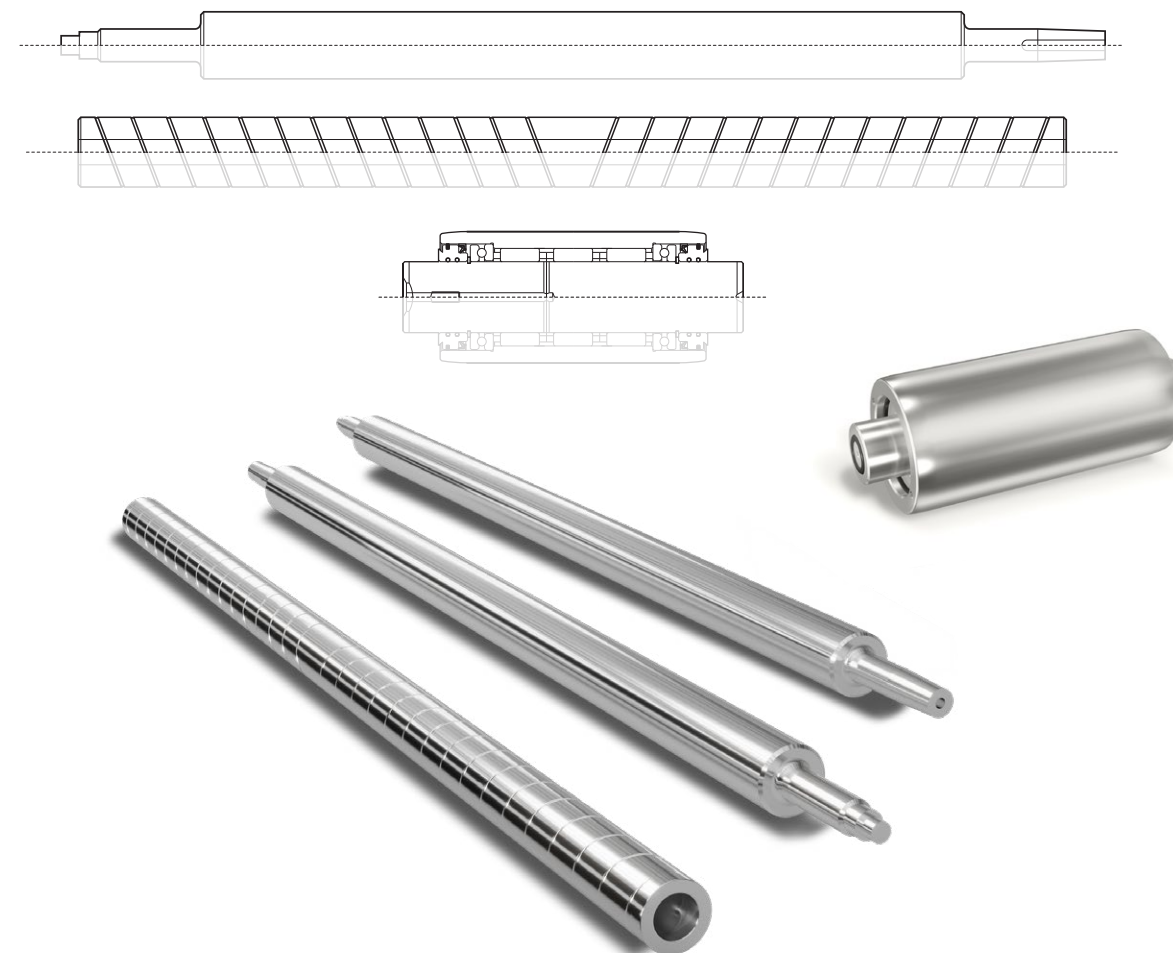
METAL WORKING SERVICE CENTRES



Used on all cut-to-length lines, they work on the strip to obtain perfectly levelled surfaces.

LEVELLERS AND STRAIGHTENERS

WORK ROLLS, INTERMEDIATE ROLLS,
BACK-UP ROLLS, COMPLETE CASSETTES



Standard diameters

from 20 mm. to 300 mm.

Standard lengths

from 1000 mm. to 4000 mm.

Mainly used steel grades

86CrMoV7 (W 1.2327)

100Cr6 (W 1.3505)

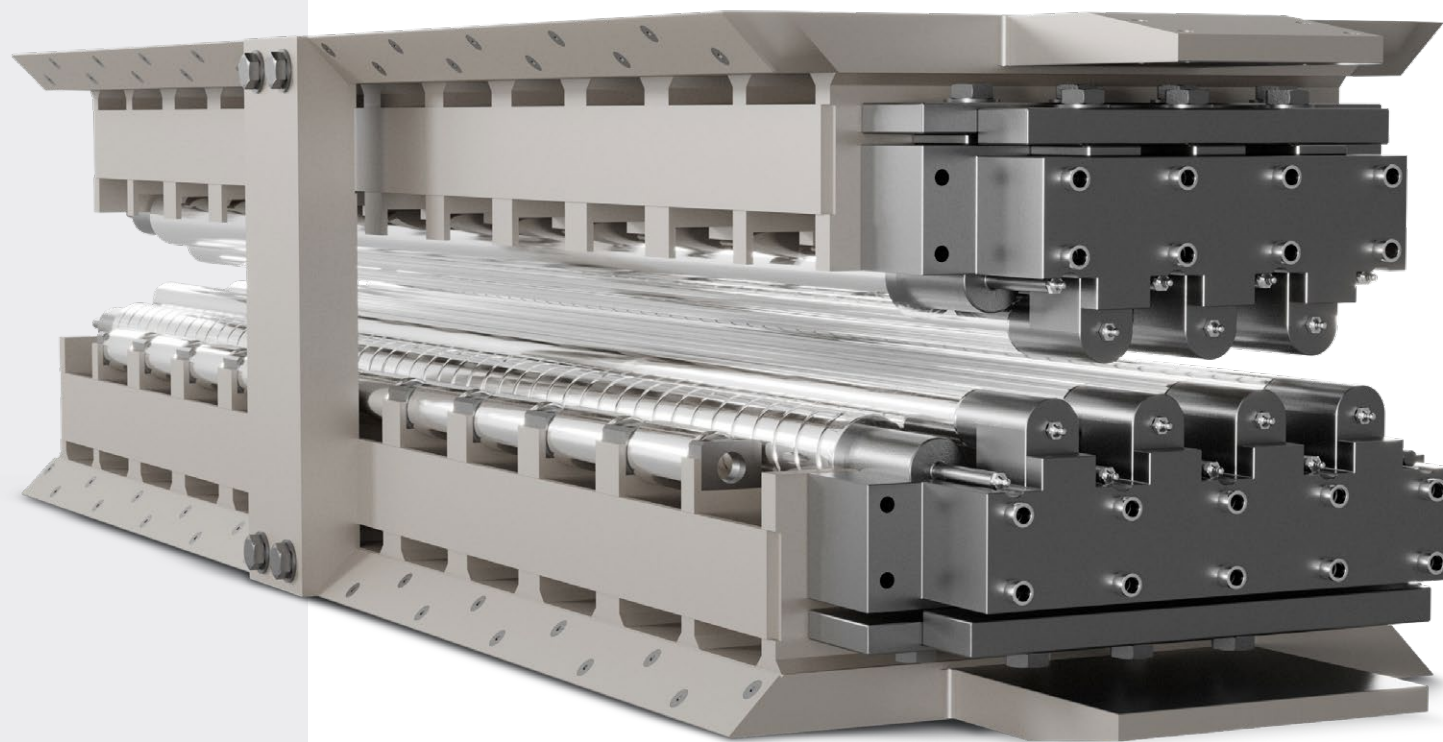
58CrMoV4 (W 1.7792)

51CrMoV4 (W 1.7701)

50CrMo4 (W 1.7228)

50CrV4 (W 1.8159)

METAL WORKING SERVICE CENTRES



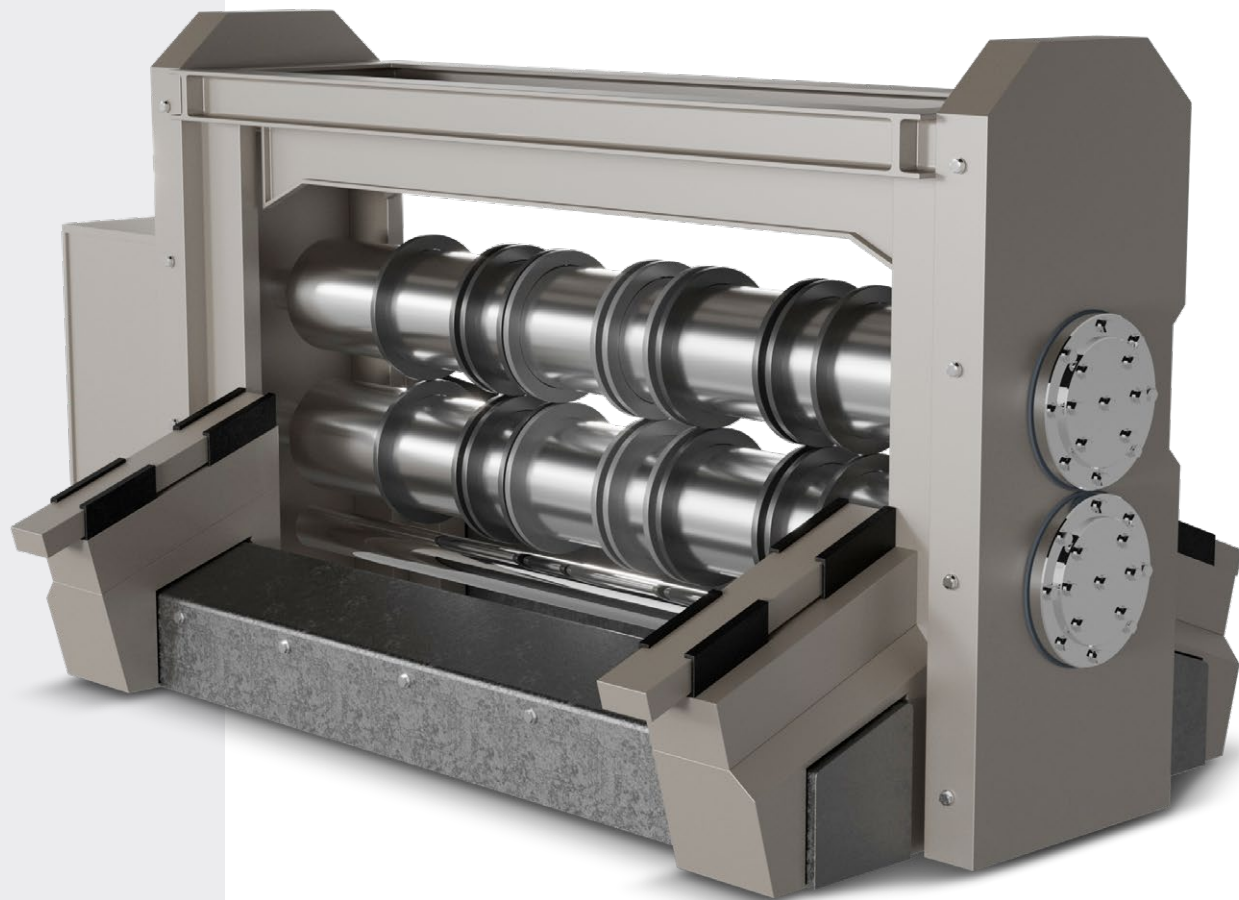
Refurbishing of single components or complete cassettes, we also have a maintenance team that can take care of the disassembly and re-assembly of the levelling cassette on the machine, and the setup and starting up of the lines.

MAINTENANCE

WORK ROLLS, INTERMEDIATE ROLLS,
BACK-UP ROLLS, COMPLETE CASSETTES

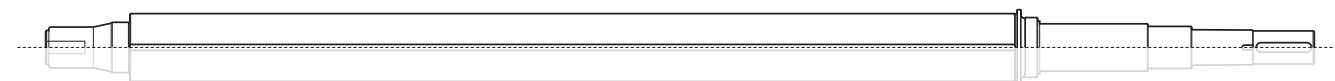


METAL WORKING SERVICE CENTRES



Manufactured in quenched and tempered steel grades, induction hardened, finished to tight geometrical tolerances to ensure high cutting performances.

SLITTING LINES ARBORS



Standard diameters

from 180 mm. to 320 mm.

Standard lengths

from 1000 mm. to 3500 mm.

Mainly used steel grades

100Cr6 (W 1.3505)

50CrMo4 (W 1.7228)

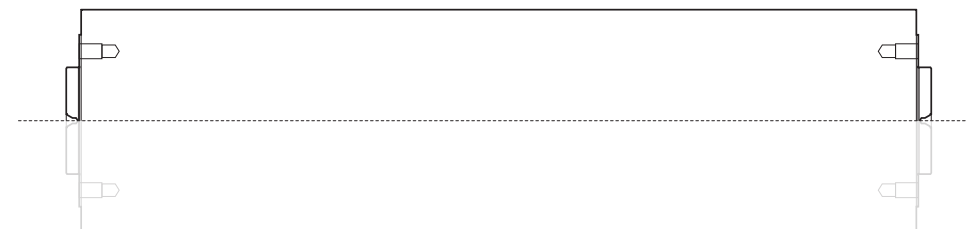
42CrMo4 (W 1.7225)

METAL WORKING SERVICE CENTRES



Usually placed after the slitter, to eliminate burrs and sharp edges coming from the cutting process.

SLITTING LINES DE-BURRING ROLLS



Standard diameters

from 180 mm. to 300 mm.

Standard lengths

from 1000 mm. to 2500 mm.

Mainly used steel grades

100Cr6 (W 1.3505)

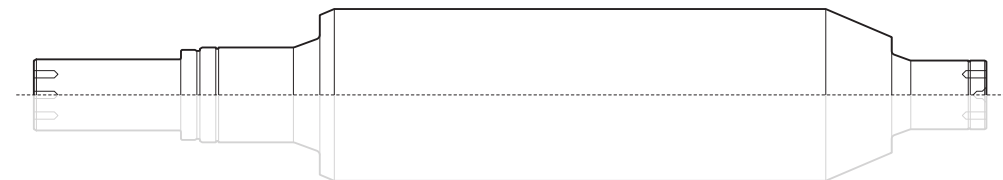
50CrMo4 (W 1.7228)

METAL WORKING SERVICE CENTRES



Manufactured in quenched and tempered steel grades, usually also induction hardened, finished dependent upon the final application.

CALENDERS CALENDER ROLLS, DRIVE ROLLS



Standard diameters
from 150 mm. to 500 mm.

Standard lengths
from 1000 mm. to 5000 mm.

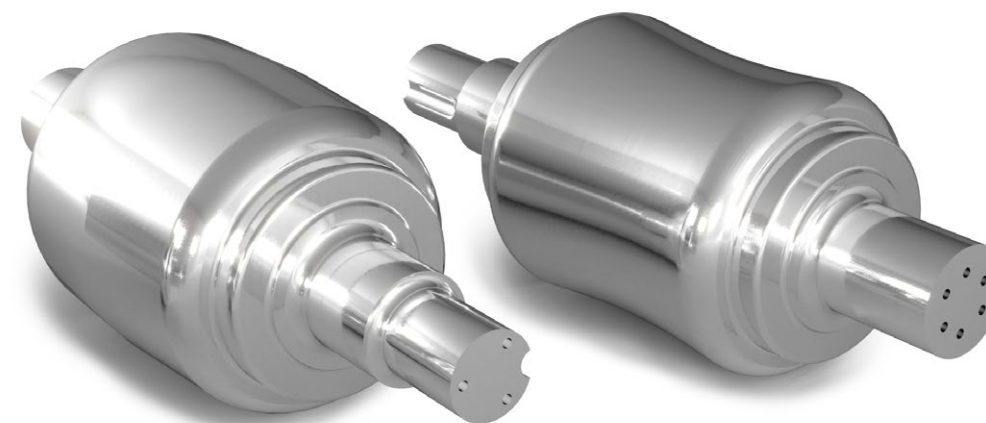
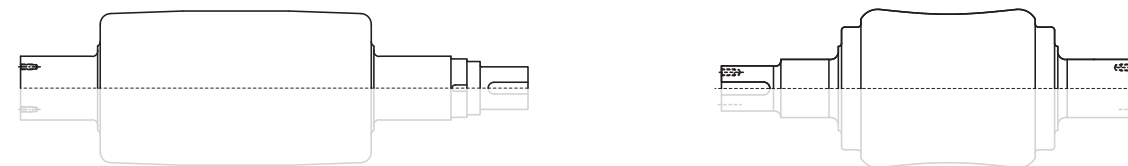
Mainly used steel grades
42CrMo4 (W 1.7225)
40CrMnMo7 (W 1.2311)

BAR MILLS



Manufactured from tool steel grades, induction or through hardened, used to straighten round bars and profiles.

STRAIGHTENERS CONCAVE AND CONVEX ROLLS



Standard diameters

from 150 mm. to 400 mm.

Standard lengths

from 500 mm. to 1500 mm.

Mainly used steel grades

X155CrVMo12.1 (W 1.2379)

86CrMoV7 (W 1.2327)



COMESA s.r.l.
COSTRUZIONI MECCANICHE SALICETO

Via Brini 36/A
40128 BOLOGNA - ITALY

Tel +39 051 328382

www.comesa-it.com

info@comesa-it.com